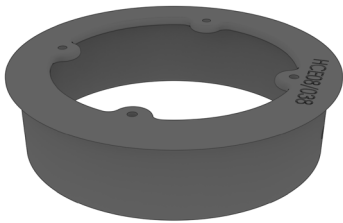


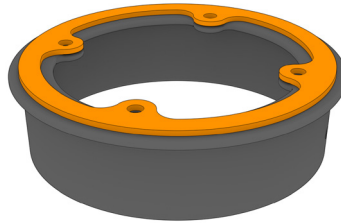


# Flue Collar Assembly

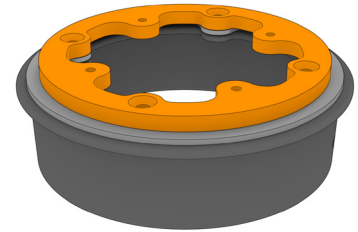
## Installation Guide



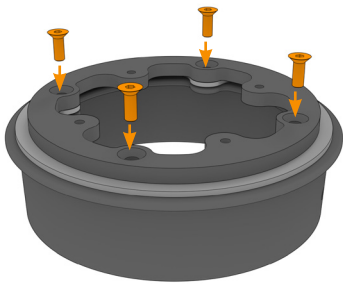
**1.** Place the flue collar upside down on a flat surface.



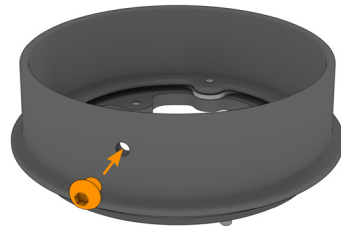
**2.** Place the flue collar gasket on top of the flue collar.



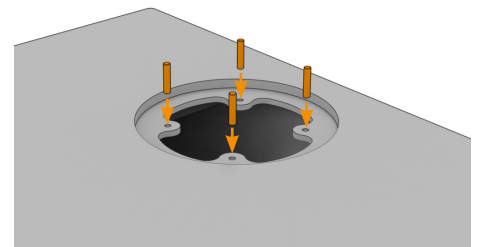
**3.** Place the adaptor plate on top of the flue collar gasket.



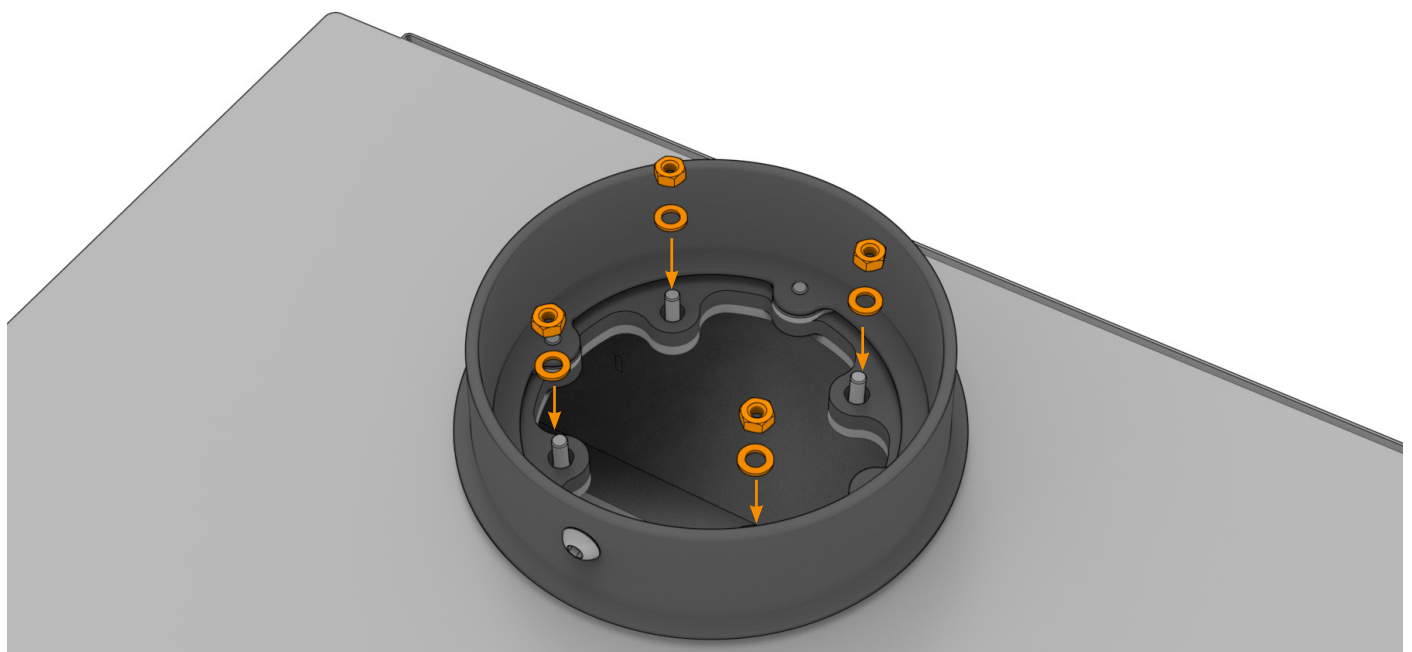
**4.** Screw in the 4x M6x16mm countersink screws and tighten.



**5.** Turn over and fit the 1x M8x10mm button head screws.



**6.** Screw in the 4x M6 Studs into the existing appliance flue plate.



**7.** Place the flue collar assembly onto the appliance and fit the M6 washers & nuts.