



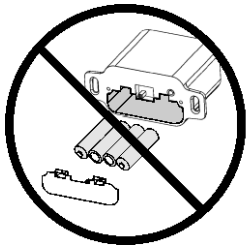
Compatibility

- Aust. Radiant Large
- Aust. Radiant Small
- Aust. PB 42 Linear
- Aust. PB 54 Linear
- Aust. PB 72 Linear
- Aust. PB 36 CleanFace

Packing List

- (1) Remote Transmitter
- (1) Remote Battery Box
- (1) Wire Harness
- (3) AAA Batteries
- (4) AA Batteries
- (2) Switch Blanks
- (1) System Jumper
- (1) IPI/CPI Jumper

Warnings



KEEP BATTERIES AND COVER INSTALLED AT ALL TIMES

The remote control system requires the batteries and battery cover to remain in place at all times. Once the batteries or cover are removed, the system may restart in standing pilot mode. If this occurs when the heater is in Remote Mode, you will not be able to turn off the heater manually from the battery box.

If you need to replace dead batteries, make sure to **turn the appliance off** before removing the batteries.

NOTE: If the batteries go dead, the system will operate normally as long as household power (120v AC) is present.



The transmitter and receiver are radio frequency devices. Placing the transmitter in or near metal may severely reduce the signal range.



Turn off power to the heater during installation or maintenance (unplug or turn off at the breaker).



Turn off the main gas supply to the appliance during appliance installation or maintenance.



REMOTE CONTROL / PILOT WARNING: Installing batteries in the battery holder or connecting the appliance to power may automatically initiate the CPI pilot mode, resulting in a lit pilot flame. Do not place combustibles inside the firebox.

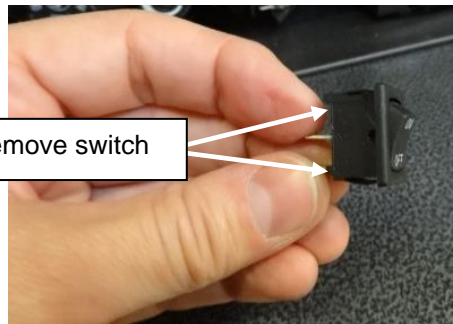
Installation



This set of installation instructions shows a summary of the remote installation. **For detailed instructions on placement of the receiver and other details, refer to the installation manual included with your appliance.**

1. Locate the on/off switch on the appliance. Access the back of the switch and remove the green and white wires. Remove the switch from its mounting location. Place the switch blank into this location.

Squeeze tabs in to remove switch

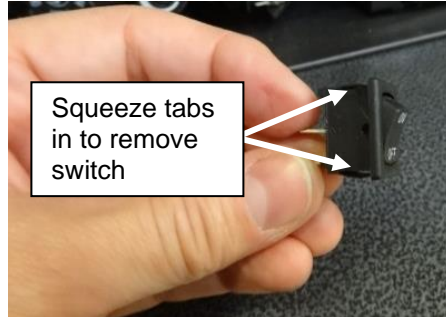




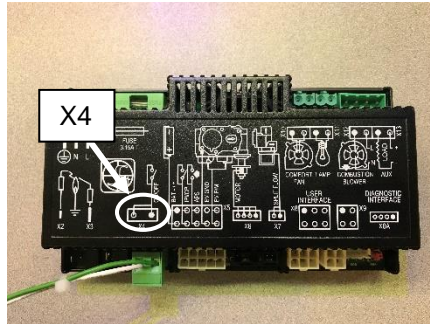
Aust. GS2 Basic Wall Mount Remote

SKU# 99300697

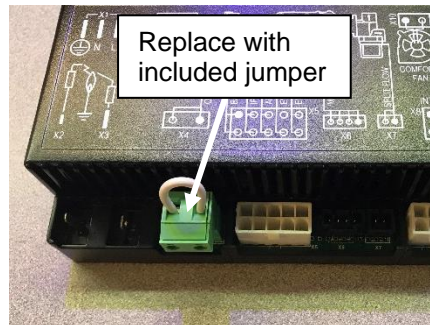
2. Locate the IPI/CPI switch on the appliance. Access the back of the switch and remove the blue and white wires. Use the included jumper to connect the blue and white wires as shown below. Remove the switch from its mounting location. Place the switch blank into this location.



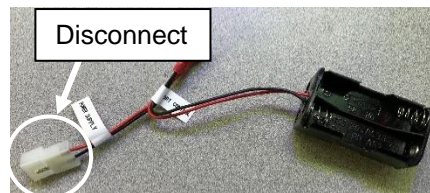
3. Follow the green and white wires to where they attach to the control module. Disconnect the green, plastic connector from the control module by lifting straight up (location is marked X4 on the module). Remove the connector and wires from the unit and discard. Install the switch blank into the empty mounting hole of the switch that was removed.



4. Install the system jumper into the same location on the board that you removed the green connector in the previous step.



5. Locate the battery holder on the appliance. Disconnect the wires at the plastic Molex connector that connect the battery holder to the appliance wiring harness. Discard the battery holder.

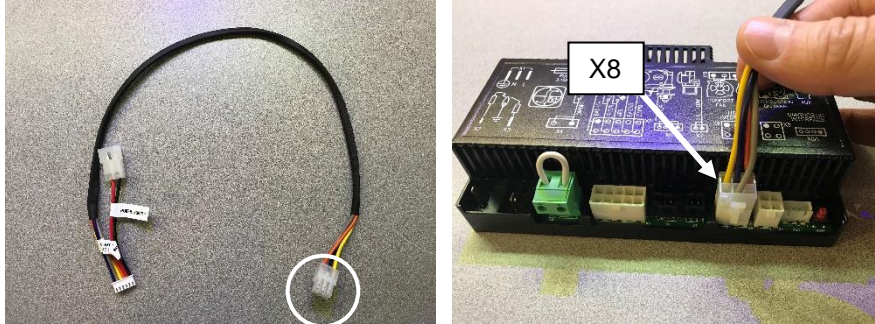




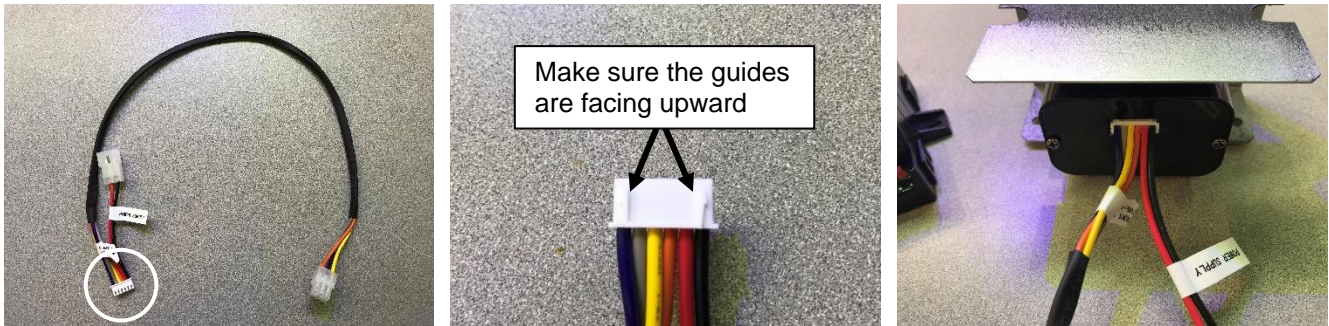
Aust. GS2 Basic Wall Mount Remote

SKU# 99300697

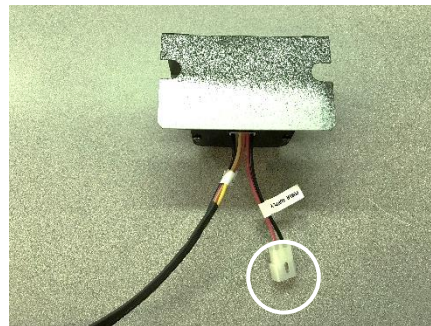
- Run the end of the included wire harness with (4) wires to the control module. Insert the connector into the "X8 User Interface" location on the module.



- Connect the flat, white connector to the back of the included remote battery box. Make sure the two guides are on the top of the connector when inserting it into the battery box.



- Attach the remaining connector with the red and black wires to the wire harness where the battery box was disconnected from in step 4.



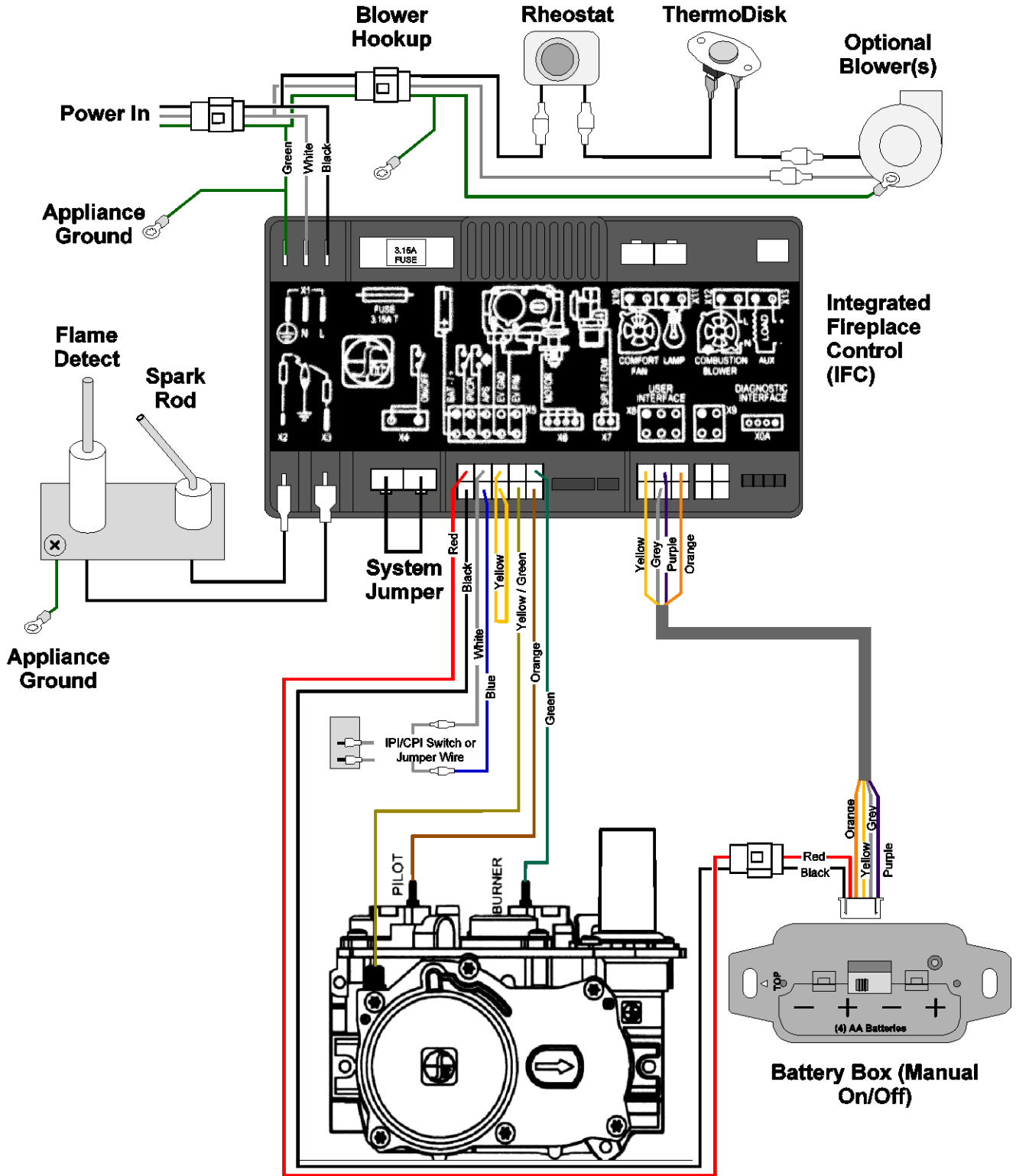
- Attach the receiver to the appliance (see owner's manual for details).
- Verify wires are not touching the bottom of the firebox. Adjust if necessary.
- Install the included (4) AA batteries into the battery box.
- Install the included (3) AAA batteries into the transmitter.
- See operating instructions for instructions on how to synchronize the transmitter to the control module.
- Return the appliance to the correct configuration.



Aust. GS2 Basic Wall Mount Remote

SKU# 99300697

Wiring Diagram

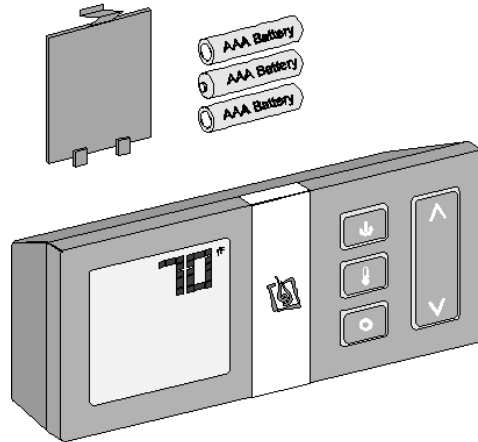




Operating Instructions

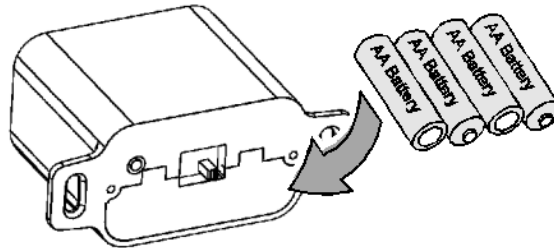
Transmitter Battery Installation

Install the three included AAA batteries into the remote (see illustration below).



Receiver Battery Installation

Install four AA batteries into the receiver (see illustration below). You can use the batteries from the battery backup tray on the appliance. See the installation instructions for details. These batteries power the receiver. The batteries also act as a power-backup in case the household (AC) current goes out (GSB2 units only).

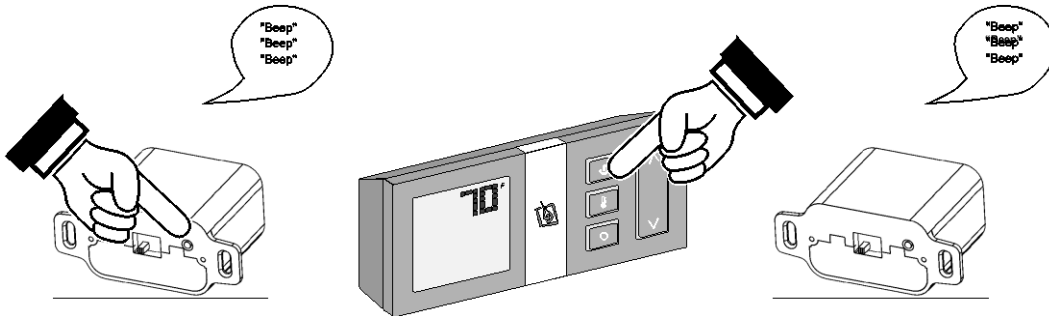




Synchronize the Transmitter to the Remote

The transmitter will need to be synchronized to the receiver before the remote will work correctly. Synchronizing is done in the following two steps below (see illustration below):

- Press the PRG (Program) button on the receiver (receiver will beep 3 times).
- Press the "ON" button on the transmitter (receiver will beep 4 times).



NOTE: If power is cut off to the receiver for an extended period of time, you may need to re-synchronize the remote.

Direct Fireplace Operation

The fireplace may be directly operated from the receiver. The three positions are below (see Figure 4):

ON – Fireplace burner turns on (regardless of transmitter settings).

OFF – Fireplace burner turns off (regardless of transmitter settings).

REMOTE – Fireplace is controlled by the transmitter.

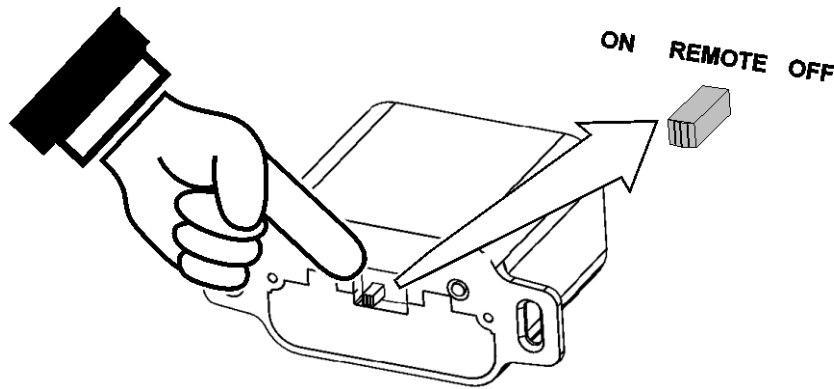


Figure 4

NOTE: When the receiver switch is turned to ON or OFF, the thermostat and burner on/off operating functions will not work on the transmitter.

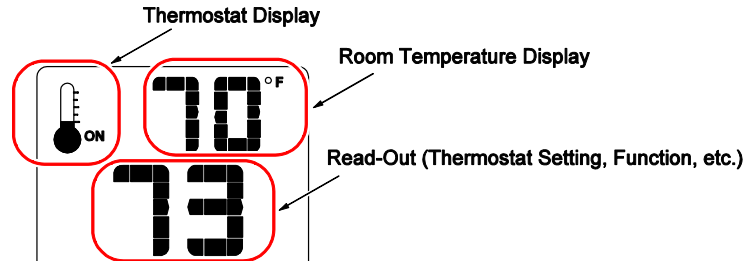


Remote Operation

When the switch on the receiver is set to “REMOTE” the transmitter operates the fireplace. Once you understand how the transmitter works, you will be able to operate your fireplace quickly and easily.

Display Overview

The transmitter display has three main sections (see below).



Listen for the “Beep”

Each time you press a button on the transmitter that controls the fireplace, a “beep” will come from the IFC. When you change thermostat target settings the IFC will not beep.

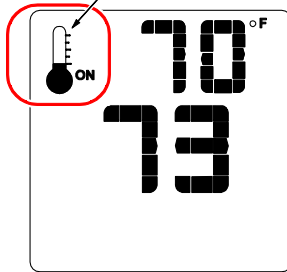
NOTE: When the batteries start to get low, the IFC will beep intermittently. When the batteries are nearly depleted, the IFC will no longer beep. See “Receiver Batteries” on page 9).



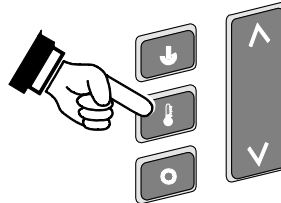
Manual On-Off / Standard Thermostat

Use the thermostat button to cycle through the two thermostat settings (see below).

Look here for the thermostat setting.

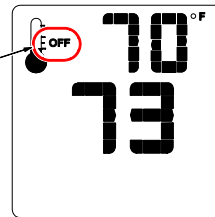


Press the thermostat button to cycle through the thermostat settings.



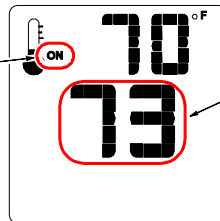
- **MANUAL ON/OFF** – The burner will turn on and off using the remote (see below). Press the On/Off button to control the burner. When off, the display will only show the current temperature.

When in manual setting, the word "OFF" will appear here.

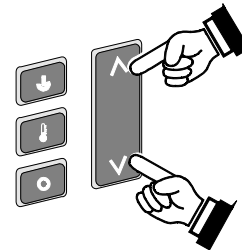


- **THERMOSTAT** - While in standard thermostat setting, the transmitter will turn the burner on and off to achieve the target temperature (see below). To adjust the target temperature, press the up and down buttons until a suitable temperature is achieved.

When in standard thermostat setting, the word "ON" will appear here.



This is the target temperature on the read-out. Use the up or down buttons to adjust the target temperature.



NOTE: If the transmitter batteries go dead while in thermostat setting, the appliance will shut off after approximately 24 hours.



Low Battery Indicator

Transmitter Batteries

The transmitter has a battery-level indicator. When it indicates low battery voltage (see Figure 1 below), install four new AAA alkaline batteries into the transmitter (see “Transmitter Battery Installation” on page 5).

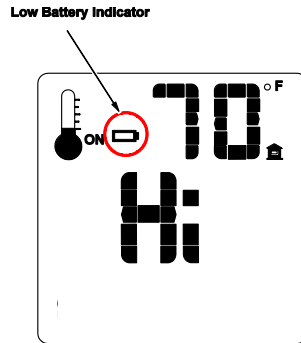


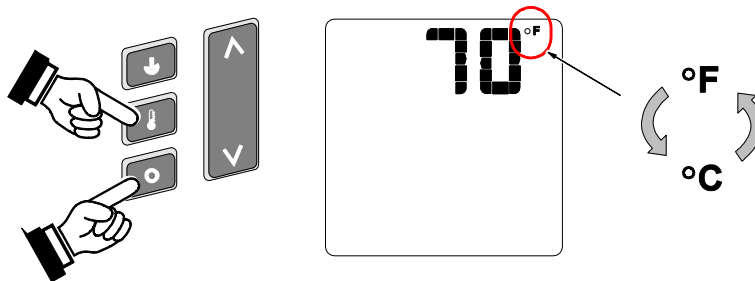
Figure 1

Receiver Batteries

The receiver will “beep” periodically when the receiver batteries go low. Install four new AA alkaline batteries into the receiver when this occurs (see “Receiver Battery Installation” on page 5). In applications where the appliance is required to provide heat, we recommend replacing the batteries before each heating season.

Display Fahrenheit or Celsius

- With the system in the “OFF” position, press both the MODE and THERMOSTAT buttons simultaneously to toggle between Fahrenheit (F) and Celsius (C).





Power Outages

On MV versions of the appliance, the receiver is powered by batteries only so power outages will not change the function operation of the remote but the optional fan, if installed, will not operate.

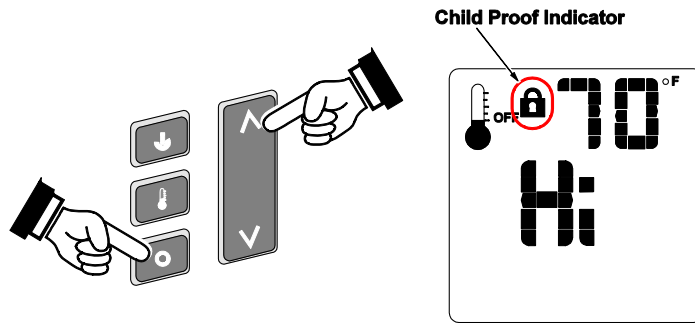
On the GS units, the remote will work if household current (AC power) is disconnected. The batteries inside the battery box will continue to power the appliance but the blower will not operate.

Child-Proof Feature

The child proof feature disables the control buttons, preventing un-wanted use of the remote.

- Press both the MODE and UP buttons simultaneously to turn this feature on and off (see below).

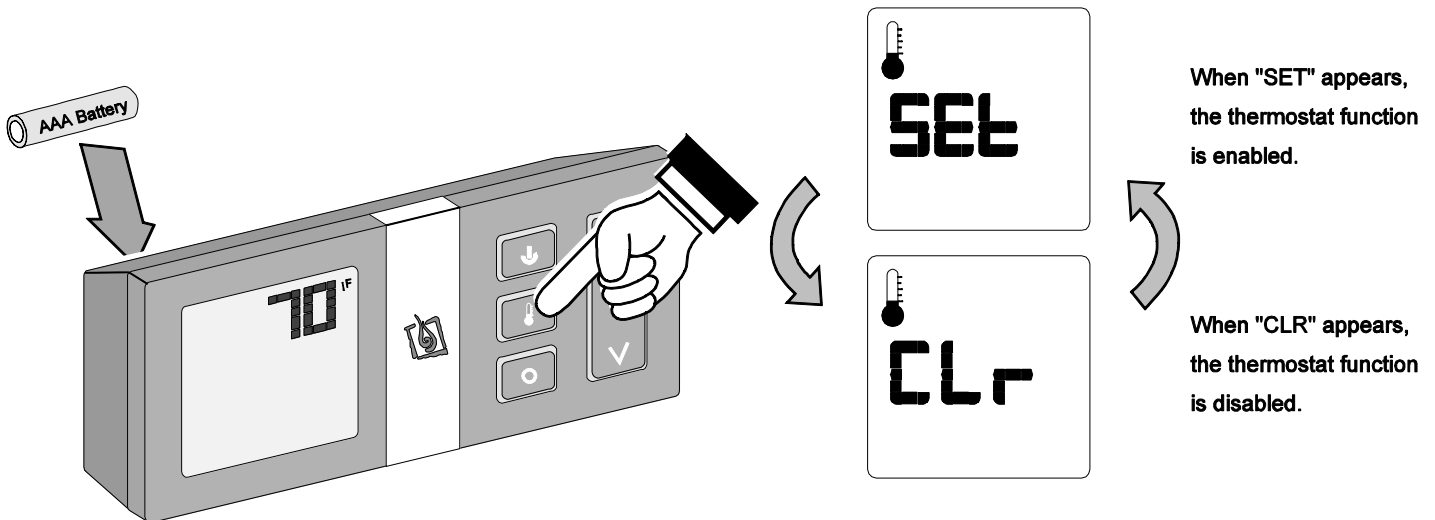
HINT: This feature is especially useful while using the thermostat setting.



How to Turn the Thermostat Feature On and Off

NOTE: The remote is shipped from the factory with the thermostat enabled.

- 1 Remove one battery from the remote.
- 2 Press down on the thermostat button while replacing the battery. This will toggle the thermostat function. Repeat this process to toggle the thermostat function to the desired setting.





Intermittent/Continuous Pilot

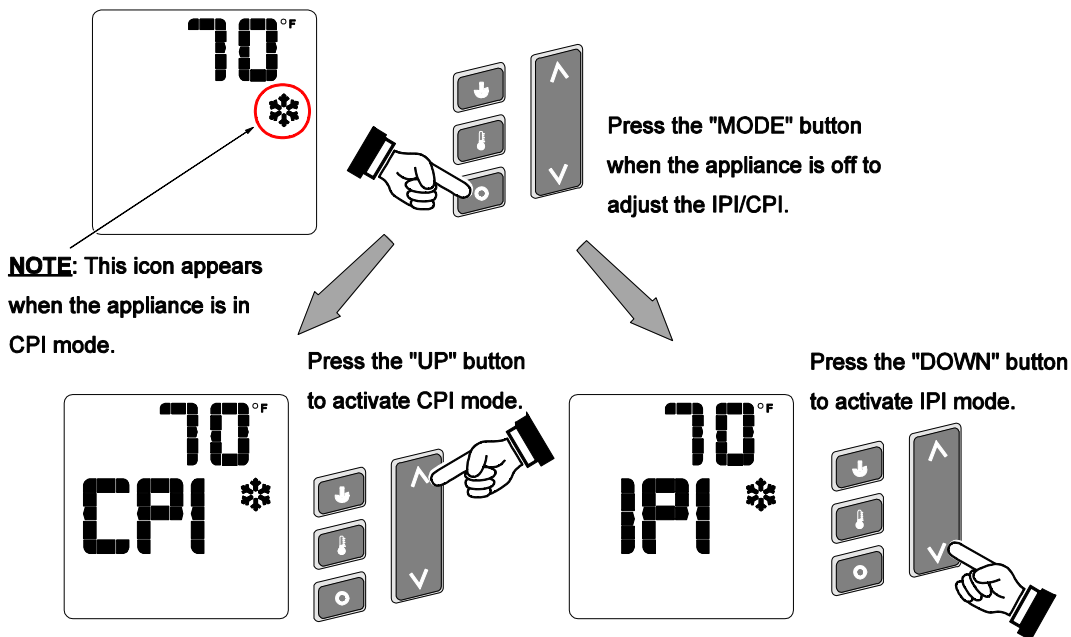
NOTE: Make sure the IPI/CPI mode is enabled on your remote. If the IPI/CPI mode does not appear, you will need to enable this mode on your remote - see "Disabling/Enabling Modes From the Remote" on the final page of this instruction sheet for details.

This heater may run with the pilot continuously running or in intermittent mode. For most homeowners, the intermittent mode is preferred (this saves fuel, doesn't give off un-needed heat). However, in some situations the homeowner may prefer to switch the heater to continuous pilot. The most typical reasons for switching to continuous pilot are:

- Very Cold Conditions – in very cold conditions you may notice that the burner does not light quickly, and the flames lift off the burner. If this is situation, we recommend you switch to continuous pilot. This will create a slight draft in the vent, allowing for the burner to light quickly and draft correctly.
- Excessive Condensation on Glass After Startup – certain installations may encounter excessive fogging on the window after startup (not just the first time the heater was started). This is an aesthetic condition that may be remedied by switching the heater to continuous pilot.
- Cold Glass or Heater Front – in very cold conditions you may notice that the heater front and glass become very cold. To remedy this, switch the heater to continuous pilot.
- Frequent On / Off Operation – if you are frequently turning the heater on and off, you may wish to leave it in continuous pilot. This allows the burner to turn on more quickly, without pilot ignition delay.

Switching from Intermittent (IPI) to Continuous Pilot (CPI)

The pilot mode on this appliance is adjusted using the remote. With the remote in the off position (thermostat off, manual off), follow the directions below to adjust the pilot mode.

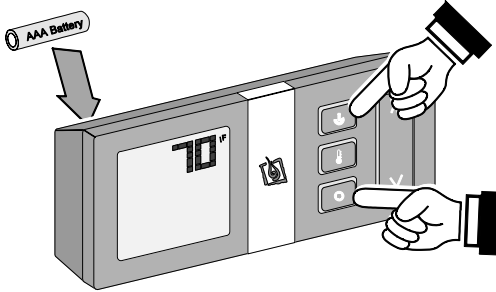




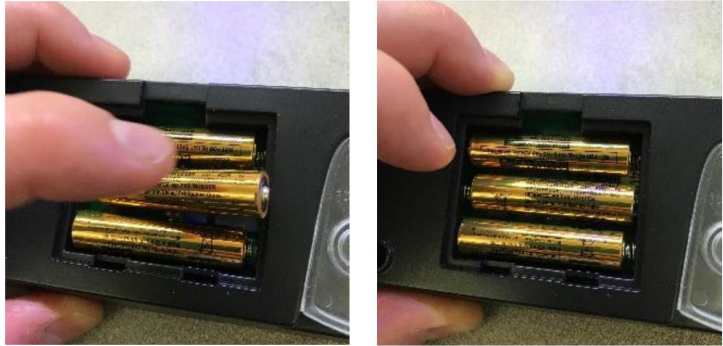
Disabling/Enabling Modes From the Remote

NOTE: The remote is shipped with the correct modes enabled. These instructions are for reference purposes only.

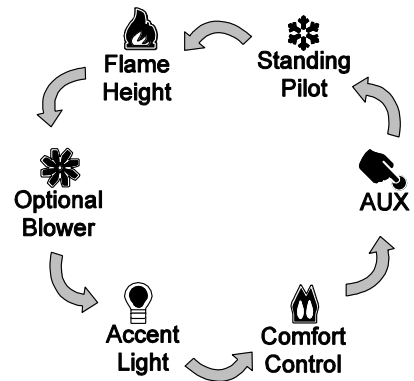
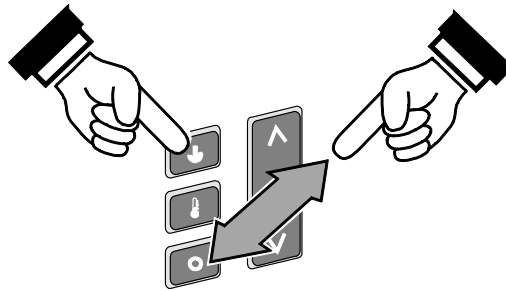
- 1 Remove one battery from the remote.
- 2 Press down on the on/off button and mode button while replacing the battery.
Make sure to keep the on/off button depressed during the following steps.



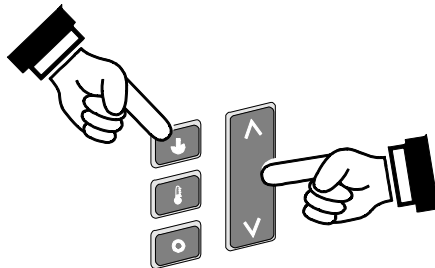
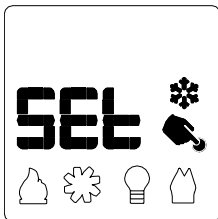
HINT: The easiest way to do this step is to place the top battery in the holder, slightly ajar. Then hold the the buttons down as you press the battery into place.



- 3 While keeping the on/off button depressed, press and release the mode button until the mode that needs to be changed is illuminated.



- 4 With the desired mode illuminated (the illustration below shows the AUX mode illuminated), press the "up" or "down" button to activate or clear the mode being addressed. Make sure to keep the on/off button depressed during this process.



^ SET
v CLR

Press the "up" button to activate ("SET") the mode selected.

Press the "down" button to clear ("CLR") the mode selected.

- 5 Release the on/off button to complete programming.